

Executive Board and Committee Chairs

EXECUTIVE BOARD

President	
- Diane Kellar	253-874-0537
Past President	
- Pam Elliott	253-941-9052
Vice Presidents	
- Carol Novotney	253-952-6429
- Frances Painter	206-714-1877
Secretary	
- Connie Mayor	253-331-8962
Treasurer	
- Susan Alcalá	253-344-1767
Membership	
- Janine Walker	253-941-4958
Newsletter	
- Jill Ellis	253-927-1260

COMMITTEE CHAIRS

Auction 2012	
- Diane Kellar	253-874-0537
Audit	
- Teresa Koe	253-845-1612
Block of the Month	
- Suzanna Gantt	253-431-5659
- Jan Bruell	253-661-2211
Community Outreach	
- Su Jaynes	206-765-6095
Community Outreach BOM	
- Anna Hudson	253-905-7170
Email	
- Mici Wiggins	360-519-3442
Hospitality	
- Carol Berge	253-859-8913
Liaison with Emeritus	
- Pam Elliott	253-941-9052
Public Relations	
- Susan Alcalá	253-344-1767
Raffle Quilt (2013)	
- Linda Hill	
- Kay Thomas	
- Kathy Wyckoff	206-824-3307
Retreats	
- Janine Walker	253-941-4958
Scrapbook	
- Gail Woods	253-344-1104
Storage Unit	
- Janine Walker	253-941-4958
Sunshine	
- Colleen Linstead	253-859-0690
Telephone	
- Margaret Mortenson	253-839-0954
Webmaster	
- Agnes Rischard	253-833-8302

Newsletter Contributors

Diane Kellar	Connie Mayor
Frances Painter	Carol Novotney
Janine Walker	Mici Wiggins
Susan Alcalá	Eileen Peacher
Carol Berge	Jenny Talia
Theresa Fancher	

President's Pieces

Diane's Ditherings

Thank you, merci, grazie, danke, tak, toda, arigato, obrigrado, gracias, asante, kamsa hamnida, salamt poh, dziekuje, shukran, do jeh, xie xie—any way you say it, I appreciate your support this past year!

It has been a tumultuous year, to say the least. There are so many people to thank for all their support. If I tried to name everyone, I would surely miss someone, so will just say thanks to everyone, especially those who have served on the board or chaired a committee. Many of you put in many hours to support the guild and keep all of our programs running. I really appreciate all of your work!

I am looking forward to having much more time to quilt this next year when I am no longer president. I have many UFOs to finish, so hope to get back in the running for the UFO contest next year. What if I actually finished them all?:

Thanks again!

Diane

This is Diane next year, →
trying to finish her UFOs
and win the contest.

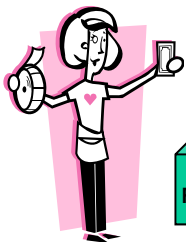


Multi-Service Donations:

As we approach graduation let's help those who are having difficulty accomplishing that goal.

- Educational Support : Offer encouragement to our at-risk youth (and adults) by helping provide resources they will need to prepare for their GED exams. Specific needs are:
- Dictionaries: Merriam Webster Dictionary, new edition (paper, red and blue cover), approximately \$6 each
- GED Book: "Complete GED Preparation" (paper, green cover with orange), approximately \$19 each
- Calculator: Casio FX-260, 10-digit solar scientific calculator, approximately \$10 each
- Spiral notebooks; pens and pencils

This is YOUR newsletter. If you have something you'd like to contribute, please email (jillzquilts@hotmail.com) or mail (P.O. Box 4243, Federal Way 98063) it to me by the 15th of the month. Thanks! jill



2013 Raffle Quilt – Linda Hill, Kay Thomas, Kathy Wyckoff

“Star Light -- Flower Bright”

By the time this newsletter is published, the raffle quilt will be completed. The piecing, the appliqué, the quilting, the binding. All done! The grand unveiling will be at the April business meeting. You are going to be amazed!!!

The raffle quilt committee has done **our** part. Now it is time for you, our guild members, to do **your** part - sell tickets. Tickets and pictures will be available in May.

Treasurer’s Report – Susan V. Alcala

The CQ Treasury held a total of \$10,350.88 on March 1: \$6,703.97 in Savings and \$3,646.91 in Checking accounts. Committee chairpersons and others should submit forms and receipts for Fiscal Year 2012-2013 by April 25 for payment.

Classified Ad:

Lonely Quilter seeks man with interest in fabrics and an ability to show appreciation for quilting. Own machine an advantage. Must be able to cook, clean, and help pin quilts. Please send picture of sewing machine.



Dues are Due! – Janine Walker

Membership renewal fees of \$30 are due in May. This year there will be a bound directory; if you wish to be included in it, your membership must be up to date.

Stash Bash – Ongoing Competition – Jill Ellis

Using only your stash, create something wonderful. You can purchase fabric for the four Bs (back, borders, binding, and batting), but the fabric for the rest of the top has to come from what you already have, using nothing purchased or given to you after June 1, 2011.

Each item will be measured along all four sides and the total number of inches will be on the slip put in the drawing box (I will provide a tape measure at each meeting). Those with the highest amount of inches at the May 2012 business meeting will be winners (number of winners to be figured out later). The item must be complete, which means quilted and bound, in order to count as a finished item.

2012 CQ Retreat Schedule – Janine Walker

Those who didn't Attend the previous retreat may sign up first. Retreats are \$23 a day.

2013 Schedule:
May 6-9
June 21-24
October 18-21
November 11-14



May Hospitality and Birthdays

Please bring hospitality goodies to guild meetings during the month of your birthday. In addition to bringing treats, you are responsible for helping with room setup and cleanup. Contact Carol Berge, 253-859-8913, if you have questions or are unable to attend.



Happy Birthday!

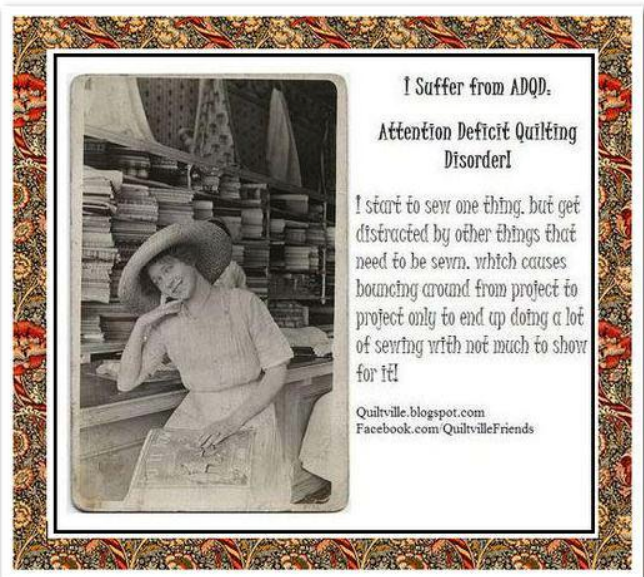
Gail Woods	1	Su Jaynes	11
Mary Jo Knittel	1	Lynn Ready	14
Sherrie Geffe	2	Gail Gentry	18
Maddie Hall	4	Nancy Neff	25
Marcy Walsh	9	Shirley Stangeland	29





Community Outreach – Su Jaynes

Hi everyone, with all the rain, I'm getting web feet here. Not much is new, but I still need completed lap quilts, size 40-45 inch square, PLEASE. Still looking for someone to take over for me.



Members' Seller Table – Jill Ellis

Do you have stuff you no longer need? Do you have stuff you look at and think, "Why in the world did I buy THIS?"? Need a little cash? Every business meeting you have an opportunity to sell your good stuff to good people. You'll go home with money, they'll go home with bargains, and everyone's happy! I made a bit over \$300 in March, and that was just stuff I threw in a box at the last minute. If you'd like to sign up to sell your STUFF, please contact me. jillzquilts@hotmail.com or 253-927-1260.

Quilt Show Information: The Boutique – Theresa Fancher, Chairman

The boutique will be selling items in two categories:

- Items donated to the guild to sell with all proceeds going to the guild. Items remaining after the quilt show will be offered for sale at a business meeting to the membership at a discount, then will be donated at the executive board's discretion.
- Commission items offered for sale by members with 25% of the proceeds donated to the guild. Items remaining after the show will be returned to the member.

All items should be quilting-/sewing-related or of great interest to a quilter. What would you buy at a quilt show? We do reserve the right to decline items that may be difficult to sell. The state requires us to charge sales tax.

I have some requests to assist in making the boutique a success:

- I'd like a partner or two in crime. Duties: helping me log items received, pricing, organizing and merchandising prior to the show, displays, restocking, ringing up sales, keeping things organized and looking good at the show, tallying receipts at the end of the show. If you'd like to help with any or all of these tasks, please let me know.
- To borrow for displays: tables, quilt racks, any other types of racks or displays you think would be helpful to display items. At this point, I'd just like your pledge. I'll make a list and contact you closer to the show. I may need assistance getting these items to and from the show.
- Your ideas!
- Your items to sell, either donated or commissioned. I will take donated items at any time. I'd prefer to wait until closer to the show to accept your commissioned items. I want to be sure and keep good track of those!

Thank you!

Places to Go . . . Quilts to See



April 1-30: Fidalgo Island Quilters Quilt Walk. Participating merchants in downtown Anacortes showcase quilts in their store windows.

April 26-27: Odessa High School Gym, 107 East Fourth Avenue, Odessa WA. www.odessaquiltclub.com

April 27-28: 28th Annual quilt show presented by Seaport Quilters, Clarkston High School, 401 Chestnut, Clarkston WA. www.seaportquilters.com/quiltshow.htm

May 17-18: "Quilts in the City," presented by Yakima Valley Quilters. Yakima Convention Center, 10 North Eight Street, Yakima WA. www.yakimavalleyquiltersguild.org

June 19-23: Western Washington Quilt Shop Hop, 15th anniversary. Hours 9 a.m. to 8 p.m. Wednesday through Saturday, 10 a.m. to 5 p.m. Sunday. 52 shops participating. www.washingtonquiltshophop.com

July 20-21: Garden & Quilt Tour, presented by Mukilteo Lighthouse Quilters. Over 100 quilts on display in seven premier gardens in and around Mukilteo. The tour is open to the public, admission \$15 for advance-purchase tickets, or \$18 if purchased the day of the tour. www.mukilteogardenandquilttour.org or www.mukilteolighthousequilters.org.

July 19-21: Sunbonnet Sue Quilt Club Quilt Show, 301 West Hendrickson, Sequim, Sequim Middle School Gym. Daily hours 10-5, \$5 donation requested.

July 26-28: Cedar River Quilters Quilt Show, Liberty Park, Renton WA

July 26-28: Busy Bees Quilters Quilt Show, Monroe High School, 17001 Tester Road, Monroe WA. www.busybeequilters.com

August 2-4: "At the Hop," presented by Covington Quilt Guild. Cedar Heights Middle School, 19640 SE 272nd Street, Covington. Judged quilts, vendors, I Spy game for kids, fat-quarter baskets for raffle, mini shop hop, bed turning, demos, bazaar, raffle quilts, tea room, hourly door prizes, Featherweight sewing demo. Admission \$5.00 donation at the door, kids under 12 free. Small quilts for swale at local businesses benefit the HUGS Quilts given to local charities.

August 23-25: Pacific West Quilt Show, Greater Tacoma Convention & Trade Center, 1500 Broadway, Tacoma. Workshops begin Thursday, August 22. For show info, registration, and entry forms, go to www.apwq.org.

Name:
Description of your project:
Date project was started:

LAST MONTH FOR THE UFO Contest: May 2012-April 2013 – Xenia McGowan

- * Project must have been started prior to May 1, 2012 and completed by April 2013.
- * Project start date is the date CQ member began work on the project.
- * "Started" means some progress has already been made (cutting, stitching, etc). Simply buying fabric/patterns doesn't qualify as a UFO.
- * Total outside perimeter must be at least 54 inches.
- * "Finished" means that quilting and binding are done. Embellishments are optional.
- * UFO Entry forms should be submitted when project is shown during Show & Tell at business meetings.
- * Entry forms may be submitted with a picture of completed project if project is not be available for Show & Tell.
- * UFO projects other than quilts are eligible for entry if project has at least 6 hours labor involved in completion.
- * Have fun. Get creative!

Upcoming Events for Crazy Quilters

May 9	Program Night: 7:00 p.m., Emeritus Assisted Living. Annual Mother's Day Potluck. Bring your mom or your mom-in-law, and your favorite potluck dish. Be there at 6:30 so we can get to eatin'. ☺
May 25	Business Night: Committee reports, Show & Tell, BOM, Block-in-a-Box
Friday Friends (every Friday)	Join several club members every Friday, 10 a.m. to 2:00 p.m. Milton Community Center, 1000 Laurel Street, Milton 98354 Bring your lunch, work on your unfinished projects or start a new one, and have fun with fellow Crazy Quilters. We generally do not meet the Friday before a major three-day holiday such as July 4, Memorial Day, Labor Day, or if the Community Center is closed.

Minutes – March Business Meeting – Connie Mayor, Secretary



Visitors;

Linda from Tacoma, a quilter since 1982
Geri a co-worker, she is doing her first quilt

Old Business;

Minutes of last meeting approved as read in newsletter.
Audit of books will be done by Barb Vander Weil and Theresa Coe.; third person yet to be named.
Hospitality chair still vacant for new year. Let us know if you are interested.
Community Service chair needs to be filled for next year, as well.

New Business;

We now have a Facebook account - go on and "LIKE" us.
Request for a raffle quilt by church - moved and passed. Request for raffle quilt for Tacoma/Pierce City Health Dept. moved and passed.

Mici can no longer deliver quilts to PICC. Jill will do it now.

2013 Quilt Show flyers are done for us to give out and put on bulletin boards. Will be sent to quilt guilds and other quilt shows.

Committee Reports;

Alice Marshal from Running Stitch Fabrics in Kent will be doing our program night for April 11th.

Treasurer

Checking \$3592.37, savings \$6703.97 = \$10,296.34
Books will be balanced by end of April.

Outreach;

12 quilts will be given to foster kids. Su Jaynes will be doing grab bags of fabric for tops.
Lap quilts needed again for Emeritus. 40" to 45" size, needed, a lot of them for men.

2013 raffle quilt; Linda Hill and Kathy Wyckoff say everything is done but binding.

Retreats;

April - 19 thru 22
May - 6 thru 9
Contact Janine Walker to sign up

Block of Month;

Jan Bruell has an appliqué apron pattern for this month

Community Outreach Block: Anna Hudson has a pinwheel block you can check out if you turned in last month's.

Quilt Show; Challenge - has 18 people signed up so far. Boutique - make pincushions, iron caddy, etc.
Baskets - 13 signed up to do them. Need to bring fat quarters still for fat quarter cakes.

Drawings;

Block of Month = Tina McCarter
Badge = Cheryl Belcher
UFO challenge ends in May

Jill Ellis gave \$60.00 to guild as 20% of her sales tonight at the Member Sales Table. Sign up with Jill if you want to sell your unwanted textile-related stuff.

25 Quilt Tips from Kim Diehl – contributed by Carol Berge –

found at <http://blog.shopmartingale.com/quilting-sewing/25-quilt-tips-from-kim-diehl-quilt-books/>

Kim's Pin Points: Color and Design

- Can't find fabric in the right color for your quilt? The wrong side of a printed fabric may provide you with the perfect color option.
- The secret to successfully mixing many different prints is to noticeably vary the size and scale of the patterns that are placed next to each other. Whenever possible, place larger and smaller prints together, rather than positioning those of the same scale side by side. If you find that many of my prints are of a similar size, vary the value of the colors to achieve contrast and add further definition.
- To easily give any quilt an old-fashioned, vintage feel, simply substitute muslin for the background prints called for in the directions. Your quilt will instantly exude traditional charm.
- When arranging blocks into a quilt top, position pieces with strong hues in the corners to clearly define and anchor your quilt center.
- Remember that the value of any print can change depending upon the colors positioned immediately next to it. If I decide to work a light print into a quilt top that largely features darker tones, I will position it next to a medium-toned print to minimize the difference. The medium print acts as a bridge to blend the surrounding colors, and the lighter print adds interest without distracting from the overall look of the quilt.

Kim's Pin Points: Staying Organized

- When you begin a new project, take a moment to wind three or four bobbins. You'll save time later!
- Organize patchwork sets or appliqué pieces, especially for travel or classes, by layering them between paper plates. Special instructions can be written directly on each plate, and the plates can be stacked together to keep your work neat, compact, and easily portable.
- If you're constantly losing your scissors, try this little trick. Follow the manufacturer's instructions to apply a 3M hook to the side surface of your sewing machine or an adjacent wall...or, throw restraint completely out the window and attach a hook to both! Hang a pair of scissors on your new holder, and they'll never be lost again.

Kim's Pin Points: Appliqué

- If you wish to appliqué a particular pattern but the shape appears too difficult, modify the pattern by fattening thin points and plumping narrow inner curves. No one will know it but you!
- Instead of using a single piece of fabric for your appliqué background, try substituting a simply pieced background of two or more neutral prints for added interest and impact.
- To eliminate pinning freezer-paper layers after the appliqué shape has been traced, hold the tip of a hot iron to the topmost paper layer at spaced intervals around the shape, at least ¼" *outside* the drawn lines. Hold in place until the layers are fused, and then cut out the shape.
- To achieve consistent seam allowances when cutting appliqué pieces, place a small strip of ¼" masking tape on the end of your thumbnail to use as a visual guide.

Kim's Pin Points: Machine Sewing

- As you begin sewing a machine-stitched seam, grasp the spool and bobbin threads and pull them gently as the fabric begins to feed under the presser foot. This will enable the fabric to feed smoothly and will also prevent thread snarls.
- For patchwork that includes layered triangles or squares that are pinned together or joined with a diagonal seam, try this little trick. Pin the pieces together as usual, and then place a small dot of basting glue within the seam-allowance layers near each point to prevent them from shifting as you stitch. Your stitched patchwork will always have perfectly aligned edges.
- If you find that your pieced blocks are consistently just a bit small, even when using a quarter-inch foot, here's a quick little trick that may make a difference in your accuracy. For sewing machines with incremental needle positions, try setting the needle just one notch to the right of the center position. Sew a test block and measure your results—this slight adjustment can be just enough to compensate for the thread or two that is lost to the fold of fabric when your seam allowances are pressed.
- To increase accuracy, when seated at your sewing machine, position your chair squarely in front of the needle. This may seem overly simple, but sitting at even a slight angle to the needle can distort your view as you sew and cause variances in your seam allowances.

Kim's Pin Points: Pressing

- To save time as you press, position your ironing board next to your sewing machine at table height. You'll eliminate extra steps.
- If your iron doesn't feature a nonstick pressing surface and it begins to show signs of residue build-up, here's a little trick to spruce it up. Unplug the iron and let it rest until the pressing surface is cool to the touch. Next, gently rub a dampened Mr. Clean Magic Eraser over the plate to remove any build-up; wipe thoroughly with a clean dry cloth.
- To easily protect your ironing board surface and keep it in "like-new" condition for longer, try ironing a sheet of freezer paper onto the cloth pad before you begin pressing your appliqués. The paper will protect the surface from any fabric adhesives, and once your pressing is complete it can be peeled away and discarded.
- For a quick and easily portable pressing board, particularly for classes, try cutting a square or rectangle of corrugated cardboard from a sturdy box. In addition to being lightweight and disposable, cardboard makes a perfectly flat and firm work area that can be ideal for achieving well-pressed appliqué edges, and the finish enables your iron to glide smoothly across the surface.

Kim's Pin Points: Smart Tips for Every Quilter

- For smooth-hanging wall hangings, place a second hanging sleeve at the bottom edge of the quilt and insert a small dowel that has been cut slightly narrower than the width of the quilt. The added weight will eliminate any ripples and your piece will hang beautifully.
- When "un-sewing" a seam, a clean eraser or the sticky side of a length of masking tape can be lightly rubbed over any remaining threads to loosen and remove them from the cloth.
- Consider using quilting thread when hand sewing your binding to the back of your quilt. The fibers are made to be pulled through the layers multiple times, so there will be less fraying and tangling, and your stitches will be sturdier.
- When you are signing quilt labels or signature blocks, first iron a piece of freezer paper to the wrong side of the fabric to stabilize it. Remove the paper after you complete the writing.
- For quick cleanup after sewing, wrap masking tape around your fingers, adhesive side out, and use it to retrieve fallen threads and fabric scraps from your carpeting and clothing.